



Good Made®



Imperial
HARDWARE COLLECTION

PRODUCT PRICE LIST
2023-24



Good Quality for Good Impression

Good Made is all about creating long-lasting, good relations and impressions. At Good Made, we don't see architectural hardware as a means to fix things. They actually open up ideas. They build and reflect status. They convey all that is good about a person.

You can easily judge a person the moment you step into his home or office. It reflects his choices and his personality. Good Made does precisely the same. Each architectural hardware made by Good Made is characterised by meticulous attention to detail and a poetic embodiment of ingenuity. A whole range of hardware from Good Made come in a wide variety of styles, materials, and finishes, so you can find the perfect one to complement your space. Explore it all here.

Assurance of Quality

We know, your hardware makes you feel most at ease. Good Made is all about bringing the utmost quality to you. By ensuring that you have everything you need to do your job with ease, we can increase your leisure at home or productivity in the office.

Pristine Performance With All-in-House Production

At Good Made, we keep everything in our hands to ensure the optimum quality of our offerings. Following stringent quality control procedures, we design, develop, manufacture and pack everything at our own facility, equipped with modern equipment.





CONTAINS

Cabinet Handle _____	01
Drawer Knob _____	17
Drawer Kadi _____	22
Accessories _____	26
Curtain Brackets _____	31
Sofa Leg _____	40
Mortise Handle _____	57
Lock Body _____	68
Pin Cylinder _____	69
Glass Door Handle _____	70
Main Door Handle _____	73
SS 202 Handle _____	78

Material: Zinc



324	Finish	96	160	224	288
	CP/Matt	184	308	476	572
	Satin/BC	216	372	556	668



334	Finish	96	160	224	288
	CP/Satin/White	332	528	708	896
	Black TT	360	584	780	980
	RG AC/Gold AB	380	624	828	1040



351	Finish	96	192	256	320
	CP	184	328	456	596
	Brushmatt/AB	216	392	536	692
	Gray	236	432	588	752



355	Finish	96	160	224	288	Knob
	Brushmatt	244	372	516	604	160
	BC	244	372	516	604	160
	AB/AC	244	372	516	604	160



356	Finish	96	160	256	320
	Matt, CP	216	388	628	892
	RG	248	452	716	996
	Gray	268	492	772	1064



357	Finish	96	160	224	288
	Satin/CP	432	696	944	1208
	AB/Black	432	696	944	1208
	RG CP/BN CP	464	760	1024	1304



02 Cabinet Handle

Material: Zinc



360	Finish	96	160	224	288
	CP Satin	324	544	756	964
	RG/Wenge, M.Gold/Black	356	608	836	1060
	Wine TT	388	672	916	1156



361	Finish	96	160	224	288
	CP	224	308	392	456
	M.Gold, Satin	256	372	472	552
	Gray	276	412	524	612



364	Finish	96	160	224	288
	CP, Black	272	404	544	748
	Satin	312	476	632	852
	RG	312	476	632	852



365	Finish	96	160	224	288
	CP	200	288	364	428
	Brushmatt, RG	232	352	444	524



366	Finish	96	160	224	288
	Black	204	340	484	656
	RG, Satin	236	404	564	752
	PVD Gold	268	468	644	848



367	Finish	128	192	256	
	SS/Black	552	816	992	
	AB/White	552	816	992	
	PVD Gold/Black	648	960	1168	

Material: Zinc



Finish	96	160	224	288
Satin/CP, Black/TT	360	576	788	1012
AB/Gray	412	680	920	1168
RG/Gray	412	680	920	1168



Finish	96	160	224	288
Brush Matt	292	444	572	704
AB	292	444	572	704
PVD Gold, PVD RG	356	572	732	896



Finish	96	128	160	224
Black	204	280	356	536
Satin Matt, AB	236	328	420	616
RG	236	328	420	616



Finish	96	160	224	288
Black TT, Brush/Gray	364	592	788	984
RG White	396	624	868	1080
Gold AB	396	624	868	1080



Finish	96	160	224	288
Black	260	436	588	744
Satin/AB	292	500	668	840
RG/Gold	292	500	668	840



Finish	96	160	224	288
White	224	348	472	616
Brushmatt/AB	256	412	552	712
PVD RG/Gold	288	476	632	808



04 Cabinet Handle

Material: Zinc



Finish	96	160	224	288
Black	212	348	472	652
Brushmatt/AB	244	412	552	748
PVD RG/Gold	276	476	632	844



Finish	96	160	224	288
CP Brushmatt	324	496	700	880
AB Gray	356	560	780	976
PVD RG AC	380	584	812	1008
PVD Gold Black	420	656	892	1104



Finish	96	160	256	320
Black	260	376	552	716
Brushmatt / AB	292	440	632	812
PVD RG, PVD Gold	324	504	712	908



Finish	96	160	224	288
CP/SS Matt	356	564	776	940
Black/TT	356	564	776	940
PVD RG/Gray	436	732	992	1200
PVD Gold/AB	396	652	888	1076



Finish	Knob	96	160	224	288	416
Black	172	228	372	524	700	928
SS Matt/AB	188	260	436	604	796	1056
PVD M.Gold, PVD M.RG	220	316	548	744	964	1324



Finish	Knob	96	160	224
Black	140	224	376	600
SS Matt/AB	148	256	440	680
PVD RG, PVD Gold	188	288	516	780

Material: Zinc



382

Finish	96	160	224	
Black	424	660	844	
AB	440	696	888	
PVD Matt RG	632	1076	1364	
PVD Matt Gold	632	1076	1364	



383

Finish	96	160	224	
Black/Gold	512	720	904	
PVD RG/Gray	532	760	960	
AB/PVD Gold	512	720	904	



384

Finish	96	160	224	288
Black	208	324	452	568
AB	240	388	532	664
PVD Gold, PVD RG	272	452	612	760



385

Finish	96	160	224	288
Black	252	364	540	648
Brushmatt/AB	284	428	620	744
PVD RG, PVD Gold	316	492	700	840



386

Finish	96	160	224	288
SS Matt/CP	464	704	880	1000
Black/TT	424	616	768	880
PVD RG/Gray	484	732	912	1032
PVD Gold/AB	456	668	832	948



804

Finish	96	160	224	288
CP Satin, AB Black	364	568	772	1008
CP Black, CP White	364	568	772	1008



06 Cabinet Handle

Material: Zinc



805

Finish	96	160	224	
Satin, Wenge	544	852	1116	
AB Black	544	852	1116	
CP/Black, CP/White	512	788	1036	



808

Finish	96	128	160	
CP/ Matt	212	256	300	
AB	220	268	316	



809

Finish	96	160	224	288
CP/Matt	264	388	516	656
AB	272	404	536	680



810

Finish	64	96	128	
CP/Matt	228	292	376	
Black	236	304	392	



811

Finish	96	160	224	288
Wenge, Satin	420	640	828	1040
AB Black	420	640	828	1040
CP Gray, CP White	420	640	828	1040



812

Finish	96	160	224	288
CP	344	552	716	856
Brush Matt, AB, Gray	448	748	960	1164



Material: Zinc



Finish	128	192	256	320
Black, CP	380	536	664	804
AB, Brush Matt	428	620	744	932
Cubik Wenge	532	650	896	1108



Finish	96	160	224
CP Satin	380	600	816
RG/ Cubik Wenge	380	600	816
AB	380	600	816



Finish	96	160	224	288
CP/Satin	352	548	776	996
RG/Cubik Wenge	376	596	836	1068
Satin/Texture	376	596	836	1068
M.Gold/Black	376	596	836	1068



Finish	96	160	224
Black TT	396	572	728
PVD RG & Gold	588	828	1080



Finish	96	160	224	288
RG/BN, Satin/BN	392	624	860	1088
Wine/TT	424	688	940	1184
PVD Gold AB	440	720	980	1232



Finish	96	160	224	288
Matt/CP	332	560	768	876
PVD Gold/AB	396	688	928	1116
RG/ Cubik Wenge	380	656	888	1068
Wine/TT	380	656	888	1068



08 Cabinet Handle

Material: Zinc



826

Finish	96	160	224
CP/SS Matt	480	724	920
Black/TT	480	724	920
AB/Black	512	788	1000
PVD Gold/Black	600	944	1200
PVD RG/Cubic Wenge	600	944	1200



827

Finish	96	160	224	288
CP/SS Matt	468	700	908	1108
Black TT	468	700	908	1108
Wine/TT, RG/TT	500	764	988	1204
PVD Gold AB	532	828	1068	1300



828

Finish	100	200	300	400	600
Black	228	400	604	776	1200
Brush Matt, AB	260	468	700	904	1384
PVD Gold & RG	308	560	844	1096	1660



829

Finish	96	160	224	288
Black/TT	348	540	788	1008
CP/Brush Matt	348	540	788	1008
PVD Gold/AB	436	732	1008	1272
PVD RG/Gray	452	764	1048	1320



830

Finish	96	160	224	288
Black/TT	384	560	744	984
Gray/Brush Matt	384	560	744	984
PVD Gold/AB	448	712	904	1176
RG/TT	416	648	824	1080



831

Finish	96	160	224	288
Black/TT	340	536	772	880
SS Matt/Gray	384	592	888	1076
PVD Gold/Black	400	664	928	1132
PVD RG/Gray	432	728	1008	1228

Material: Zinc



Finish	96	160	224	288
SS Matt/AB	228	368	520	668
Matt C.Black	256	428	592	756
PVD RG	292	496	680	860



Finish	128	192	256	352
AB	516	684	896	1220
PVD Gold, PVD RG	548	732	956	1304
PVD Black	648	876	1132	1564



Finish	96	160	224	320
CP/TT	204	352	492	780



Finish	96	160	224	288
CP	220	360	516	680
Matt	220	360	516	680
AB	228	376	536	704



Finish	96	160	224	288
CP/Matt	368	608	880	1192
CP/White	368	608	880	1192
CP/BC	368	608	880	1192



Finish	96	160	224	288
CP	216	348	512	692
Matt	216	348	512	692
AB	224	364	532	716



10 Cabinet Handle

Material: Zinc



2074

Finish	96	128	160	224
CP	180	260	336	484
Matt	180	260	336	484
AB	188	272	352	504



2075

Finish	96	128	160	224
CP	196	280	348	508
Matt	196	280	348	508
AB	204	292	364	528



2078

Finish	64	96	128
CP	156	209	260
Matt	156	209	260
AB	164	220	272



2079

Finish	96	160	224	288
CP	232	364	508	656
Matt	232	364	508	656
AB	240	380	528	680



2080

Finish	96	160	224	288
CP	248	360	476	580
Matt	248	360	476	580
AB	256	376	496	604



2086

Finish	96	160	224	288
CP	200	296	416	588
Brush Matt	232	360	496	684
AB	232	360	496	684

Material: Zinc



2089	Finish	96	160	224	320
	CP	192	300	436	644
	Brush Matt, AB	224	364	516	740
	Gray	244	404	568	824



2090	Finish	96	160	224	288
	CP	156	272	400	544
	Brush Matt, AB	188	336	480	640
	RG	188	336	480	640



2091	Finish	96	192	256	320	416
	CP	208	376	496	608	772
	Brush Matt, AB	240	448	584	720	900
	Gray	260	496	640	792	980



2092	Finish	96	160	224	320
	CP/Brush Matt	372	604	832	1136
	Brush Matt/Black	372	604	832	1136
	RG/Black, AB/Black	372	604	832	1136



2094	Finish	96	128	160
	CP/TT	248	284	356
	AB, BN	256	296	372
	RG	272	320	404



2096	Finish	96	160	224	288
	CP/Brush Matt	376	584	788	976
	RG/Cubik Wenge	404	644	860	1068
	Satin/Gray	404	644	860	1068



12 Cabinet Handle

Material: Zinc



2097

Finish	96	160		
Gray/BN, Wine/TT	444	712		
PVD Gold/White	552	836		
PVD Gold/AB	552	836		



2098

Finish	96	160	224	288
CP/Brush Matt	352	560	740	936
Gray/Black,Wine/TT	400	656	860	1080
PVD Gold/AB	416	688	900	1128



2100

Finish	160	256	320	
Satin/Black	608	832	1012	
BN/RG, AB/Black	656	904	1104	
PVD Gold/Black	996	1444	1764	



2101

Finish	96	160	224	288
CP/Brush Matt	420	632	856	1064
Black/TT	420	632	856	1064
RG/TT	452	696	936	1160
PVD Gold/Gray	500	792	1056	1304



2102

Finish	96	160	224	288
Brush Matt, AB	212	360	508	636
RG, Gold	212	360	508	636
Wine, Matt	228	392	548	684



2103

Finish	96	192		
Brush Matt	244	472		
PVD RG, PVD Gold	276	544		
AB, Black	244	472		
Wine/TT	260	508		



Material: Zinc



2104

Finish	96	160	224	288	352
Brush Matt/Black, Black/TT	412	636	924	1052	1296
Gold/AB	436	684	944	1124	1440
RG/TT	436	684	944	1124	1440



2105

Finish	96	160	224	288
Black	170	292	412	592
Brush Matt	202	356	492	640
AB	202	356	492	640
PVD RG	234	420	572	736



2106

Finish	96	160	224	288
CP/Brush Matt	348	532	696	900
Black/TT	348	532	696	900
Gold/AB	372	580	756	972
RG/TT	388	612	796	1020



2107

Finish	96	160	224	288
Black/TT	356	488	676	808
Brush Matt/Black	356	488	676	808
Gray/AB	380	536	736	880
RG/TT	396	568	775	928



2108

Finish	96	160	224	288	416
Black	224	348	496	648	1024
Brushmatt, AB	256	412	576	744	1168
Gold, RG	256	412	576	744	1168



2109

Finish	96	160	224	288
Black Glossy	252	416	556	704
SS Matt/AB	236	384	516	656
PVD RG	268	448	596	752



14 Cabinet Handle

Material: Zinc



2110

Finish	96	160	256	320
Black/CP	228	352	528	688
SS Matt/AB	260	416	608	784
PVD Gold/ PVD RG	292	480	688	880



2111

Finish	96	160	224	288
CP/SS Matt	336	540	756	968
Black/Gray	352	572	796	1016
PVD Gold/Black	368	604	836	1064
PVD RG/AC	376	620	860	1100



2112

Finish	96	160	224	288
Black	188	304	444	592
SS Matt	220	368	524	688
PVD RG	252	432	604	784
PVD Gold	252	432	604	784



2113

Finish	96	160	224	288
Black/TT	356	548	752	932
PVD Gray/Wood	400	640	868	1068
PVD Gold/AB	400	640	868	1068
PVD RG/TT	428	692	932	1148



2114

Finish	96	160	224	288
Black	216	344	488	664
SS Matt/AB	248	408	568	760
PVD RG	280	472	648	856



3001

Finish	96	160	224	288
CP, Black	208	328	480	652
Satin	240	392	560	748
AB	240	392	560	748

Material: Zinc



3002

Finish	96	160	224	288
CP	224	356	472	620
Satin	256	420	552	716
AB	256	420	552	716



3003

Finish	96	160	224	288
CP, Black	236	376	500	612
Satin	268	440	580	708
AB	268	440	580	708



3004

Finish	96	160	224	288
CP, Black	192	276	376	488
Satin, AB	224	340	456	584
RG	224	340	456	584



3010

Finish	96	160	224	288
AB	224	440	688	1048



3012

Finish	96	160	224	
CP/White	400	724	928	
CP/Gray	432	784	1004	
Gray/Satin	468	856	1096	
PVD RG/Gray	556	1036	1316	
PVD Gold/White	524	972	1240	



3013

Finish	96	128	192	320
CP/Black	328	420	640	804
CP/Gray	384	504	784	1008
SS/Black	384	504	784	1008
N-RG/TT	400	524	820	1052



16 Cabinet Handle

Material: Zinc



3014

Finish	96	192	256	320
CP/Satin	320	588	752	924
Gray/SS Matt	364	688	872	1080
Gray/White	364	688	872	1080
AB/Gray	364	688	872	1080



3017

Finish	96	160	224	288
CP/Satin,AB/Gray	348	476	580	692
RG/Texture	380	528	648	772
Gray/BN	380	528	648	772



3019

Finish	128	192	
Black/TT,Satin/Black	512	628	
PVD RG/TT	632	780	
PVD Gold/AB	568	696	



4501

Finish	45mm	65mm
White	184	320
All Finish	208	376
PVD	248	440



4502

Finish	25mm	50mm
AB	216	272
SA	216	272



4503

Finish	Rate
AB	300
SA	300
CP/Satin	300



4504

Finish	Rate
Brush Matt/CP	440
Black/CP	408
White/CP	408



4505

Finish	Rate
Satin/CP	348
Black/CP	348
White/CP	348



4506

Finish	Small	Big
CP	164	256
Matt	164	256
AB	172	268



18 Knob

Material: Zinc



4507

Finish	Rate
CP Brush Matt	308
RG/Gray, Brush Matt/Gray	336
AB/Gray, Gray/Brush Matt	336



4508

Finish	Rate
Black, CP	180
BrushMatt, RG, AB	192
Gray	212



4510

Finish	Rate
AB	228
AC	228
SA	228



4512

Finish	Rate
CP, Black	180
Brush Matt, RG	196
AB	196



4514

Finish	100mm	
CP, Black, RG	1248	
AB, White	1248	
Matt Black	1276	
PVD RG Gold	1372	



4515

Finish	Rate
All Finish	184

Material: Zinc



4516

Finish	Rate
All Finish	196



4517

Finish	Rate
CP/Brush Matt	272
Gold/Black, Wine/TT	288
RG/Texture	288



4518

Finish	Rate
AB/White	184
Satin/Texture	208
RG/Wenge	208



4519

Finish	Rate
All Finish	272



4520

Finish	Rate
Gray/AB	244
Gray/White, AB	244
RG/Gray, Gold/Gray	244



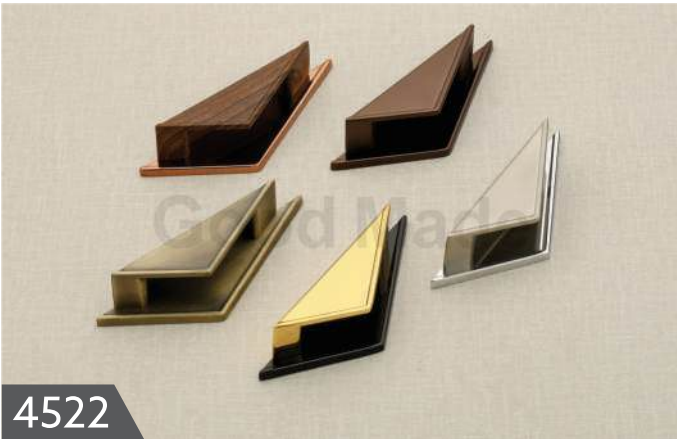
4521

Finish	Rate
CP, AB, Wine	184
PVD RG	216
PVD Gold	216



20 Knob

Material: Zinc



4522

Finish	Rate	Finish	Rate
CP/Brush Matt	324	RG/Cubik Wenge	352
AB	340	Gold/Black	352
Wine/TT	392		



4523

Finish	Rate
All Finish	192
Gray	204



4524

Finish	Rate	Finish	Rate
CP/Brush Matt	248	PVD Gold/AB	292
Black/Brush Matt	248	Black/TT	280
Wine/TT	280	RG/TT	280



4525

Finish	Rate	Finish	Rate
Brush Matt	352	PVD RG/Black	416
AB/Gray	368		
PVD Gold	416		



4526

Finish	Rate	Finish	Rate
CP/Brush Matt	208	RG/Black	228
Black/TT	216	Gold/Black	228
Cubik Wenge/Brush Matt	216		



4527

Finish	Rate
All Finish	180

Material: Zinc



4528

Finish	Rate
All Finish	100



4529

Finish	Rate	Finish	Rate
CP,	161	PVD Gold	270
Black	182	PVD R.Gold	270
AB	166		



4532

Finish	Rate	Finish	Rate
CP/Brasmatt	326	Black/PVD Gold	344
RG/TT	344	PVD Gray/Black	400
AB/Black	344		



4533

Finish	Rate	Finish	Rate
CP/SS	240	Wine/TT	254
Black/TT	234	PVD RG/Gray	282
PVD Gold/Black	250		



4534

Finish	Rate	Finish	Rate
Black	164	AB	188
Brushmatt	192	Wengi	176
Wine	192	PVD RG	216



4535

Finish	Rate	Finish	Rate
PVD Gold/AB	260	PVD RG/TT	284
Wine/TT	240		
Black/TT	260		



22 Knob & Kadi

Material: Zinc



4536

Finish	Rate	Finish	Rate
Black	164	PVD RG/Gold	196
Brushmatt	180		
AB/Wengi	176		



4537

Finish	Rate	Finish	Std
PVD RG/TT	272	Gray/Brasmatt	244
PVD Gold/Black	228		
Black/TT	228		



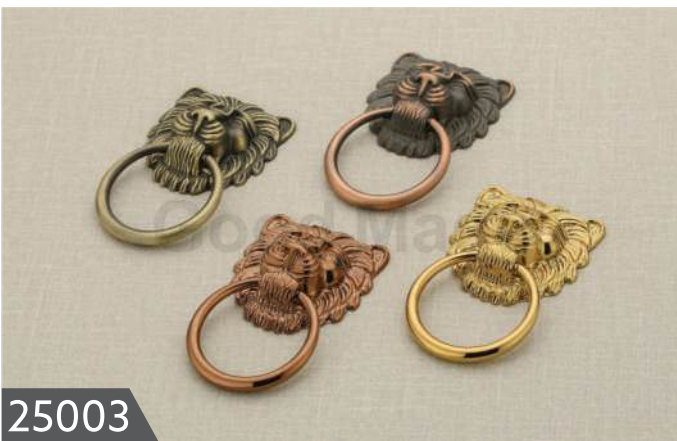
25001

Finish	Rate
AB, Black/TT	192
Satin/Wenge	192
Coco	204



25002

Finish	Rate
Satin/Gray, Black/TT	224
AB	268
RG/TT	240



25003

Finish	Small	Big
AB, AC	228	620
PVD Gold	340	1060
PVD RG	340	1060



25004

Finish	Rate
AB	208
Black/TT	208



Material: Zinc



25005

Finish	Rate
Satin, AB	176
Black/TT	180
Coco	184



25006

Finish	Rate	Finish	Rate
Satin/Gray	208	AB	244
Black/TT	228		
RG/TT	228		



25007

Finish	Rate
Gray, Black	168
SS	168
AB	168



25008

Finish	Rate	Finish	Rate
Satin/Black	280	Coco/TT	304
Black/TT, AB	280		
White/PVD Gold	280		



25009

Finish	Rate	Finish	Rate
CP	232	AB	300
Black/TT, Satin	276		
RG	276		



25010

Finish	Rate	Finish	Rate
Satin/CP	348	RG/TT	380
Black/TT	360	AB	380
Satin/Gray	360		



24 Kadi

Material: Zinc



25011

Finish	Rate	Finish	Rate
Satin/CP	296	AB	304
Black/TT	304	RG/TT	328
Satin/Gray	296		



25012

Finish	Rate	Finish	Rate
Black	184	RG	192
SS Matt	184		
AB	212		



25013

Finish	Rate	Finish	Rate
Black	200	RG	208
Matt	200		
AB	216		



25014

Finish	Rate	Finish	Rate
Black	244	RG	252
SS Matt	244		
AB	268		



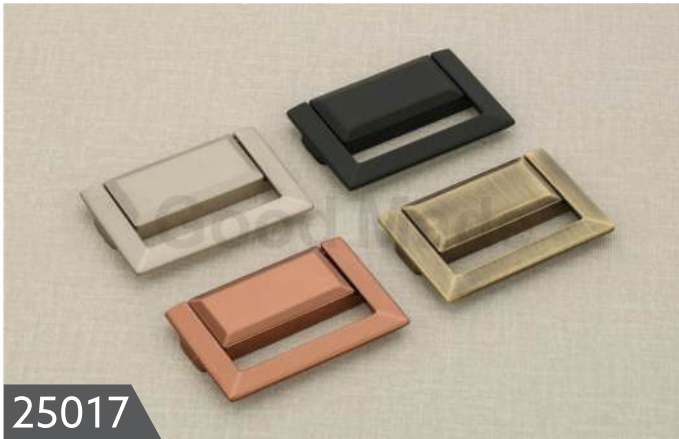
25015

Finish	Rate	Finish	Rate
Black	220	RG	236
SS Matt	220		
AB	236		



25016

Finish	Rate	Finish	Rate
Black	232	RG	232
Matt	232		
AB	232		



25017

Finish	Rate	Finish	Rate
Black	252	RG	252
SS Matt	252	PVD Gold	452
AB	252	PVD RG	452



25018

Finish	Rate	Finish	Rate
Black	232	RG	232
SS Matt	232		
AB	240		



25019

Finish	Big	Small	Finish	Big	Small
Black	192	176	RG	192	176
SS Matt	192	176	PVD Gold	280	-
AB	192	176	PVD RG	280	-



25020

Finish	Rate		
Black/TT	248		
Brasmatt/Gray	280		
RG/AB	296		



Ralway Latch

Finish	Rate	Finish	Rate
Black	424	PVD RG	656
SS Matt	488	PVD Gold	656
AB	508		

Material: Zinc



2511 (Single Hole)

Finish	Single Hole
CP	44
RG, Satin	60
Gold	60



2506 (Double Hole)

Finish	Double Hole
CP	60
Black	84
AB, RG, Gold	84



2525 Big

Finish	Rate	Finish	Rate
CP	96	Gold	110
Black	102	RG	110
AB	110		



2525 Small

Finish	Rate	Finish	Rate
CP	60	Gold	70
Black	64	RG	70
AB	70		



2526 Big

Finish	Rate	Finish	Rate
CP	96	Gold	110
Black	102	RG	110
AB	110		



2526 Small

Finish	Rate	Finish	Rate
CP	66	Gold	78
Black	72	RG	78
AB	78		



Material: Zinc



Finish	Rate	Finish	Rate
Black	400	PVD RG	560
SS Matt	444		
AB	424		



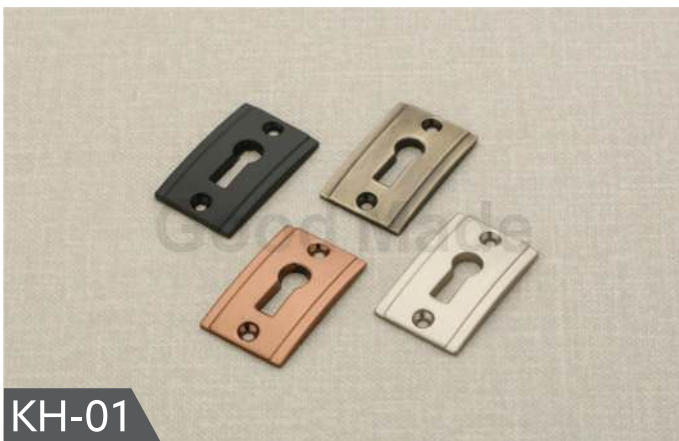
Finish	Rate	Finish	Rate
Brasmatt	312	RG/TT	360
AB	336		
Black	272		



Finish	Rate
Black/TT	512
Satin/Black	540
RG/TT, AB/Gold	540



Finish	Rate
Matt	524
AB	584



Finish	Rate
Black/AB	60
Satin/RG	64



Finish	Rate
Black/AB	76
Satin/RG	80

Material: Zinc



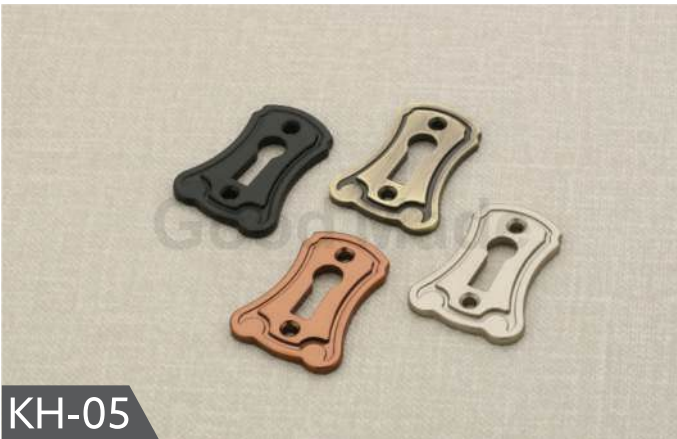
KH-03

Finish	Rate	Finish	Rate
Black	64	RG	68
AB	64		
Satin	68		



KH-04

Finish	Rate	Finish	Rate
Black	60	RG	64
AB	60		
Satin	64		



KH-05

Finish	Rate	Finish	Rate
Black	60	RG	64
AB	60		
Satin	64		



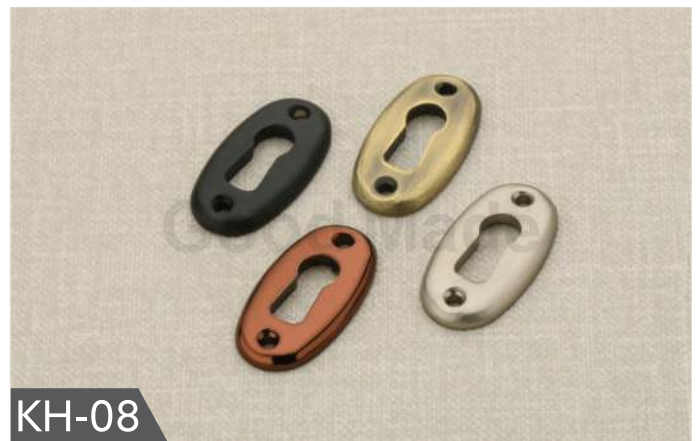
KH-06

Finish	Rate	Finish	Rate
Black	64	RG	68
AB	64		
Satin	68		



KH-07

Finish	Rate	Finish	Rate
Black	48	RG	52
AB	48		
Satin	52		



KH-08

Finish	Rate	Finish	Rate
Black	54	RG	58
AB	54		
Satin	58		



Material: Zinc



2014

Finish	4 Hook	6 Hook	8 Hook
SS, RG, Black	672	1008	1344
Wine	704	1056	1408



2015

Finish	4 Hook	6 Hook	8 Hook
SS, RG, Black	832	1248	1664
Wine	864	1296	1728



2016

Finish	4 Hook	6 Hook	8 Hook
SS, RG, Black	912	1368	1824
Wine	960	1440	1920



2017

Finish	4 Hook	6 Hook
Black/CP	624	936
AB	672	1008
PVD RG, PVD Gold	976	1464



2018

Finish	4 Hook	6 Hook
Black/CP	624	936
AB	672	1008
PVD RG, PVD Gold	976	1464



2019

Finish	4 Hook	6 Hook
Black/CP	624	936
AB	672	1008
PVD RG, PVD Gold	976	1464

Material: Zinc



2020

Finish	4 Hook	6 Hook
Black, CP	624	936
AB	672	1008
PVD RG, PVD Gold	976	1464



2528

Finish	4 Hook	6 Hook
Black, CP	624	936
AB	672	1008
PVD RG, PVD Gold	976	1464



2530

Finish	6 Hook
Black, CP	552
Brush Matt, AB	648
PVD RG, PVD Gold	768



Butterfly

Finish	Rate
Satin	568
AB	600



Finger Henger

Finish	Rate
CP	428
Satin	488
AB	488



Basuri

Finish	Rate
CP	884
Matt	884
AB	948

Material: Zinc



KB-106

Finish	Rate	Finish	Rate
Wenge	680	RG/TT	780
Mendi	680	Gold/TT	780
Silver	680	Black/TT	780



KB-114

Finish	Rate		
Crystal	852		



KB-115

Finish	Rate		
Crystal	852		



KB-124

Finish	Rate		
CP/Wenge	740		
CP/SS	740		



KB-149

Finish	Rate		
CP/Wenge	740		
CP/SS	740		



KB-174

Finish	Rate	Finish	Rate
CP/Wenge	864	RG/BN	1016
CP/Satin	864	RG/TT	1016
CP/White	864		



32 Curain Brackets

Material: Zinc



KB-176

Finish	Rate		
CP/Wenge	900		
CP/Satin	900		
CP/White	900		



KB-177

Finish	Rate		
CP/Wenge	804		
CP/Satin	804		
CP/White	804		



KB-179

Finish	Rate		
CP/Wenge	920		
CP/Satin	920		
CP/White	920		



KB-180

Finish	Rate		
CP/Wenge	840		
CP/Satin	840		
CP/White	840		



KB-184

Finish	Rate		
Wooden	1100		
Walnut	1100		



KB-185

Finish	Rate		
Wooden	960		
Walnut	960		

Material: Zinc



KB-186

Finish	Rate		
Wooden	1140		
Walnut	1140		



KB-188

Finish	Rate	Finish	Rate
CP/Wenge	900	RG/BN	1020
CP/Satin	900		
AB	960		



KB-204

Finish	Rate	Finish	Rate
Wenge	584	SS	584
Silver	584		
Purple	584		



KB-206

Finish	Rate		
Matt RG	932		
Satin/BN	932		
AB	932		



KB-207

Finish	Rate	Finish	Rate
CP/Satin	980	RG/TT	980
Gray/BN	980		
AB	980		



KB-208

Finish	Rate	Finish	Rate
CP/Satin	972	RG/BN	972
Gray/Coco	972		

Material: Zinc



KB-209

Finish	Rate		
CP/Satin	1112		
AB	1112		
RG/BN	1112		



KB-210

Finish	Rate		
CP/Satin	1016		
AB	1016		
RG/BN	1016		



KB-211

Finish	Rate		
Gray/BN	800		
AB	800		
RG/Wenge	800		



KB-212

Finish	Rate		
CP/Satin	996		
AB	996		
RG/Wenge	996		



KB-213

Finish	Rate	Finish	Rate
CP/Brush Matt	1200	AB/Gray	1280
Black/TT	1200	Wine/AC	1280



KB-214

Finish	Rate	Finish	Rate
CP/Brush Matt	1160	AB/Gold	1256
Black/TT	1160	Wine/AC	1256



Material: Zinc



KB-215

Finish	Rate	Finish	Rate
CP/Brush Matt	948	RG/Wenge	1008
Black/TT	948		
AB	1008		



KB-216

Finish	Rate	Finish	Rate
AB	1040	CP/Satin	1004
AC	1040	RG/BN	1004



KB-217

Finish	Rate	Finish	Rate
Gray/BN	1148	RG/Black	1148
AB	1148	Wine/TT	1148



KB-218

Finish	Rate	Finish	Rate
CP/Satin	992	RG/Black	1060
AB	992	Coco/BC	1060



KB-219

Finish	Rate	Finish	Rate
CP/Satin	1228	RG/TT	1348
Black/TT	1228	Wine/TT	1348
AB	1228		



KB-220

Finish	Rate	Finish	Rate
Black	824	RG	904
Satin	824	AB	904

Material: Zinc



KB-221

Finish	Rate	Finish	Rate
CP/Matt	1152	Black/TT	1152
White/Gold	1152	Wine/TT	1272
RG/Black	1152	AB/Gold	1272



KB-226

Finish	Rate	Finish	Rate
CP/Satin	1032	RG/Gray	1128
AB	1128	Gold/TT	1168
Black/TT	1128		



KB-227

Finish	Rate	Finish	Rate
CP/Satin	1320	Gold/TT	1456
Black/TT	1320	AB	1456
RG/TT	1400		



KB-228

Finish	Rate	Finish	Rate
CP/SS	1304	RG/TT	1360
Black/TT	1304	AB/Gold	1360
White/Gold	1304		



KB-229

Finish	Rate	Finish	Rate
CP Brush Matt	1060	AB/PVD Gold	1208
PVD RG/Black	1280		
PVD Gray/Black	1280		



KB-230

Finish	Rate	Finish	Rate
CP Brush Matt	1088	PVD RG/Wengi	1288
AB	1168		
Black TT	1128		

Material: Zinc



KB-231

Finish	Rate	Finish	Rate
CP/SS	840	RG/BN	928
Black/TT	872		
AB/PVD Gold	936		



KB-232

Finish	Rate	Finish	Rate
CP Matt	880	PVD RG/BN	948
PVD Gold/AB	980		
Pvd Gold/Black	900		



KB-233

Finish	Rate	Finish	Rate
Brass Matt Gray	1120	PVD RG/TT	1280
Black/TT	1120		
PVD Gold/AB	1280		



KB-125

Finish	Rate	Finish	Rate
CP	244	AB	260
RG	272		
BC	272		



KB-126

Finish	Rate	Finish	Rate
CP	392	BC	440
AB	416	Black	392
RG,	440	Coco	440



KB-128

Finish	Rate	Finish	Rate
CP	224	AB	240
RG	256		
BC	256		

Material: Zinc



KB-222

Finish	Rate		
CP	392		
AB	416		
RG, BN	432		



KB-223

Finish	Rate	Finish	Rate
Black	96 (Pcs)	AB	108 (Pcs)
SS Matt	108 (Pcs)		
RG	108 (Pcs)		



KB-224

Finish	Rate	Finish	Rate
Brush Matt	132 (Pcs)	RG	132 (Pcs)
Black	120 (Pcs)	AB	132 (Pcs)



2.5 x 12 Support

Material: SS

Finish	Rate		
CP	172		
Matt	112		



3 x 16 Support

Material: SS

Finish	Rate	Finish	Rate
CP	240	RG, Gold	360
Matt	208	AB, Black	336
Gray	360		



4x16 Single Support

Material: SS

Finish	Rate	Finish	Rate
CP	292	Gray	412
Matt	252	AB, Black	388
RG, Gold	412		



4x16 Double Support Material: SS

Finish	Rate	Finish	Rate
CP	640	RG	976
Matt	560	Gray	976
AB, Black	732		



Council Support Material: SS

Finish	Rate	Finish	Rate
Single - CP	360	Double - CP	820



Big Deluxe Support Material: Zinc

Finish	Rate	Finish	Rate
CP	672	BN, Coco	856
AB, Black	752		
RG	856		



Deluxe Double Support Material: Zinc

Finish	Rate	Finish	Rate
CP	1208	BN	1512
AB	1368		
RG	1512		



American Support Material: Aluminium

Finish	Rate		
CP (Single)	972		
CP (Double)	1304		



Disney Support Material: Zinc

Finish	Rate	Finish	Rate
CP	800	AB	856
Black	800	PVD Gold	1240
SS Matt	856	PVD R.Gold	1240

40 Sofa Leg

Material: SS-202



L-01

Finish	2"	3"	4"	6"
Comby	136	164	192	248



L-02

Finish	2"	3"	4"	6"
Comby	264	300	336	408



L-03

Finish	2"	3"	4"	6"
Glossy	280	320	360	440



L-04

Finish	2"	3"	4"	6"
Glossy	184	212	244	308



L-05

Finish	2"	3"	4"	6"
Comby	128	156	184	240



L-06

Finish	2"	3"	4"	6"
Comby	164	192	220	276



L-07

Finish	3"	4"	6"	
Satin	304	340	412	



L-08

Finish	2"	3"	4"	6"
Plate	220	260	300	380



L-09

Finish	3"	4"	6"	
Wengy/CP	560	620	740	



L-10

Finish	2"	3"	4"	6"
Plate	236	272	308	380
Data	180	216	252	324



L-11

Finish	3"	4"	6"	8"
Comby	208	240	304	368



L-12

Finish	3"	4"	6"	8"
Comby	392	440	536	632

42 Sofa Leg

Material: SS-202



Good Made®



L-13

Finish	3"	4"	6"	8"
Wenge/CP	808	880	1024	1168



L-14

Finish	3"	4"	6"	8"
Glossy	488	540	644	748



L-15

Finish	3"	4"	6"	8"
Glossy	284	320	392	464



L-16

Finish	3"	4"	6"	8"
Glossy	508	564	676	788



L-17

Finish	3"	4"	6"	8"
Satin	900	1020	1260	1500



L-18

Finish	3"	4"	6"	8"
Wenge/CP	364	404	484	564



L-19

Finish	3"	4"	6"	8"
Satin	320	356	428	500



L-20

Finish	3"	4"	6"	8"
Satin	260	288	344	400



L-21

Finish	3"	4"	6"	8"
Glossy	344	384	464	544



L-22

Finish	3"	4"	6"	8"
Wenge/CP	484	532	628	724



L-23

Finish	3"	4"	6"	8"
Satin	420	460	540	620



L-24

Finish	3"	4"	6"	8"
Glossy	232	260	316	372

44 Sofa Leg

Material: SS-202



L-26

Finish	3"	4"	6"	8"
Glossy	336	376	456	536



L-27

Finish	3"	4"	6"	8"
Mirror Glossy	352	392	472	552



L-28

Finish	2"	3"	4"	6"
Wenge/CP	184	216	248	312



L-29

Finish	3"	4"	6"	8"
Wenge	292	332	412	492



L-30

Finish	3"	4"	6"	8"
Wenge/CP	356	412	524	636



L-31

Finish	3"	4"	6"	8"
Wenge	372	444	528	632



L-32

Finish	3"	4"	6"	8"
Wenge	320	372	476	580



L-35

Finish	3"	4"		
CP	700	852		



L-39

Finish	3"	4"	6"	
CP	540	600	720	



L-40

Finish	2"	3"	4"	6"
Wenge/CP	320	368	416	512



L-41

Finish	2"	3"	4"	6"
Wenge/CP	700	760	820	940



L-42

Finish	2"	3"	4"	6"
Wenge/CP	320	368	416	512



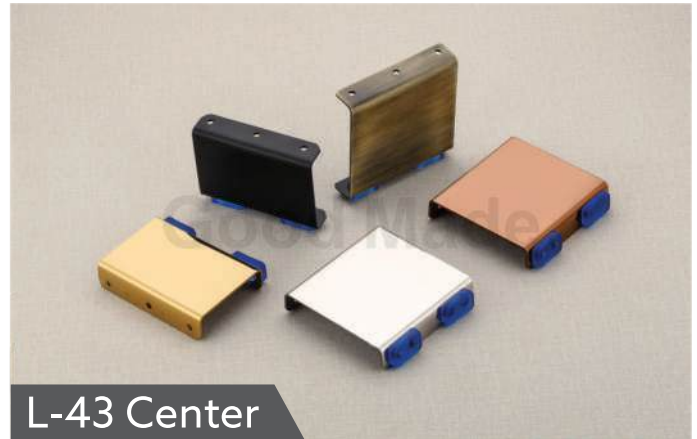
46 Sofa Leg

Material: SS-202



L-43 Corner

Finish	2"	3"	4"	6"
CP	448	532	616	780
Black	472	564	656	828
AB	576	620	720	940
PVD RG, PVD Gold	768	1012	1256	1740



L-43 Center

Finish	2"	3"	4"	6"
CP	224	268	308	392
Black	236	284	328	416
AB	288	312	360	472
PVD RG, PVD Gold	384	508	628	872



L-44

Finish	2"	3"	4"	6"
CP	484	560	636	788
Black	508	592	676	836
AB	572	660	748	948
PVD RG, PVD Gold	904	1140	1376	1848



L-45

Finish	3"	4"	6"	
Acrylic	580	620	700	



L-46

Finish	3"			
Interial	880			



L-47

Finish	3"	4"	6"	
CP & Matt	780	884	1088	



L-48

Finish	3"	4"	6"	
Matt	1620	1880	2400	



L-49

Finish	3"	4"	6"	
CP	620	668	764	



L-50

Finish	2"	3"	4"	6"
CP	300	340	380	460
BN	436	500	568	700
PVD RG, PVD Gold	660	740	900	1180



L-51

Finish	3"	4"	6"	
CP	460	512	616	



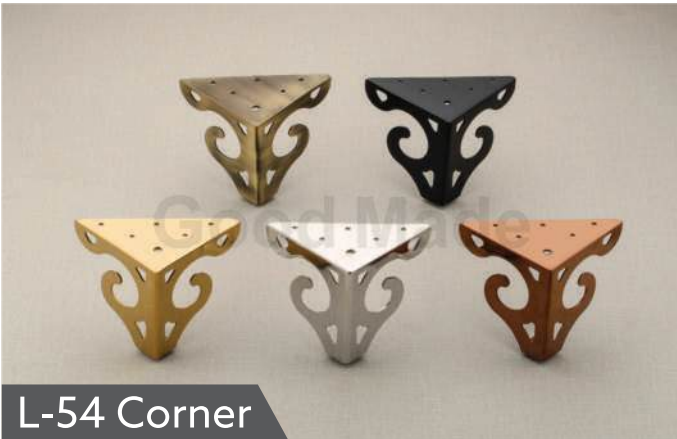
L-52

Finish	3"	4"	6"	
CP/TT	360	396	468	
BN	528	600	740	



L-53

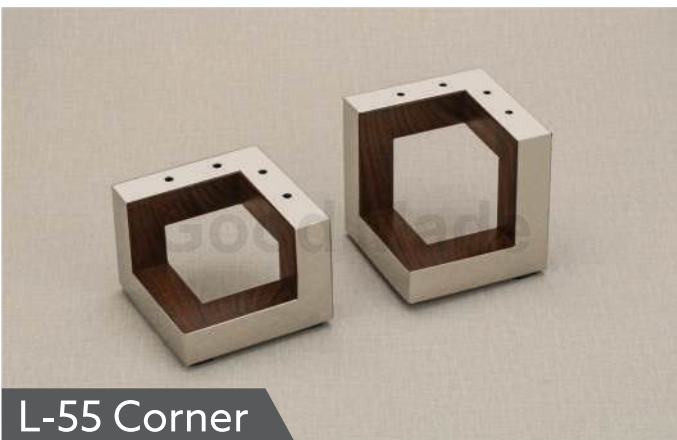
Finish	3"	4"	6"	
Wenge/CP	472	524	628	



Finish	4"	Finish	4"
CP	760	PVD RG	1240
Black	800	PVD Gold	1240
AB	840		



Finish	4"	Finish	4"
CP	760	PVD RG	1240
Black	800	PVD Gold	1240
AB	840		



Finish	3"	4"		
Wenge	1160	1252		



Finish	3"	4"		
Wenge	1032	1124		



Finish	4"	Finish	4"
CP	760	PVD RG	1120
Black	800	PVD Gold	1120
AB	840		



Finish	4"	Finish	4"
CP	760	PVD RG	1120
Black	800	PVD Gold	1120
AB	840		



L-57

Finish	2"	3"	4"	6"
CP	364	412	460	556
Black	388	444	500	604
AB	448	540	616	756
PVD RG, PVD Gold	664	792	920	1176



L-58

Finish	3"	4"	6"
Mirror Glossy TT	456	496	576



L-59

Finish	3"	4"	6"
CP	296	336	416



L-60

Finish	3"	4"
CP	624	768
Black	660	820
AB	744	928
PVD RG, PVD Gold	924	1128



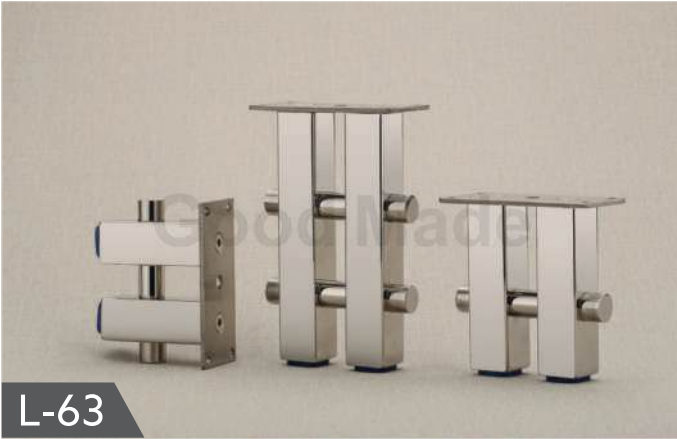
L-61 Corner

Finish	2"
CP	428



L-61 Center

Finish	2"
CP	312



L-63

Finish	3"	4"	6"
CP	580	632	736



L-65

Finish	4"	5"	6"	8"
CP	560	732	1000	1260
Black	576	756	1060	1340
AB	672	860	1160	1480
PVD RG, PVD Gold	880	1072	1380	1680



L-66

Finish	3"	4"
CP, Black	580	660
AB	696	800
PVD RG, PVD Gold	940	1060



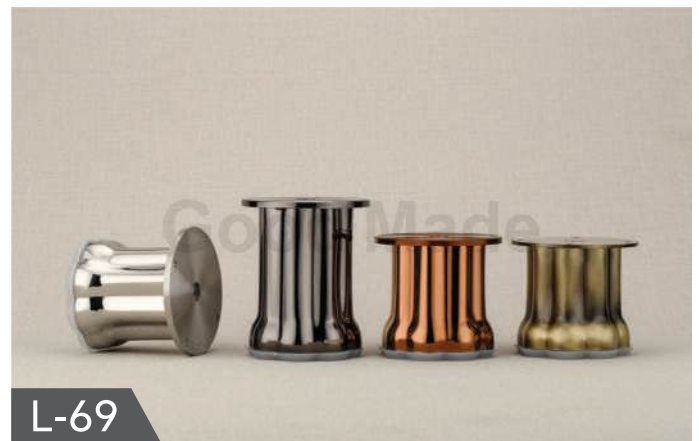
L-67

Finish	3"	4"	6"
Satin/Wenge	800	880	1040



L-68

Finish	3"	4"	6"
CP	420	460	540
BN	580	648	780



L-69

Finish	3"	4"	6"
CP	508	556	652
AB	508	556	652
Black	568	624	740
PVD RG, PVD Gold	1088	1296	1712

Material: SS-202



L-70

Finish	2"	3"	4"
CP	168	260	328
PVD RG	216	332	428
PVD Gold	216	332	428
PVD Black	216	332	428



L-71

Finish	3"	4"	6"
CP, Black	756	804	900
PVD RG	936	1004	1140
PVD Gold	936	1004	1140



L-72

Finish	4"	6"	8"
Black	912	1012	1208



L-73

Finish	3"	4"	6"
CP	480	520	600
Black	540	600	712
AB	632	688	792
PVD RG, PVD Gold	940	1120	1380



L-74

Finish	3"	4"	6"
CP	552	596	684
PVD Gold	664	708	820
PVD RG	664	708	820



L-75

Finish	4"	6"
Satin/CP	680	852
Satin/Gray	680	852
PVD RG/TT	748	1048
PVD Gold/Black	748	1048



52 Sofa Leg

Material: SS-202



L-76

Finish	3"	4"	6"
CP	384	412	468
Black	384	412	468
AB	476	532	648
PVD RG, PVD Gold	664	732	948



L-77

Finish	4"	5"
Black	1960	2120
AB	2260	2480



L-78

Finish	4"
Black	1400
AB	1568



L-79

Finish	3"	4"	6"
CP	460	496	568
Black	492	536	632
AB	560	632	740
PVD RG, PVD Gold	680	756	908



L-80

Finish	3"	4"	6"
CP	244	272	328
PVD RG	364	432	568
PVD Gold	364	432	568



L-81

Finish	4"	Finish	4"
CP	1020	PVD Gold	1660
Black	1060	PVD RG	1660
AB	1300		

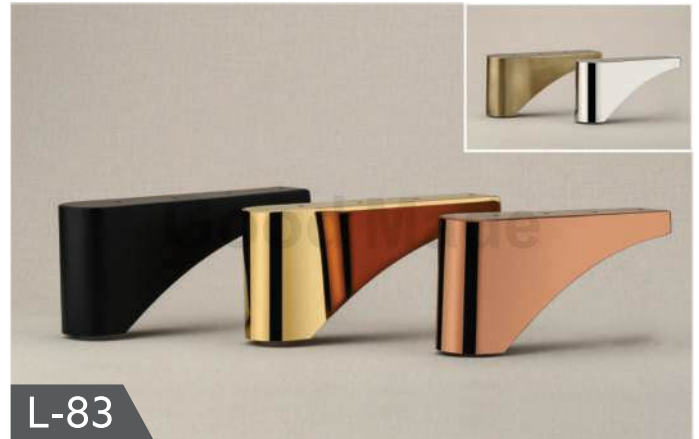


Material: SS-202



L-82

Finish	4"	Finish	4"
CP	584	PVD RG	984
Black	608	PVD Gold	984
AB	744		



L-83

Finish	3"	4"		
CP	840	980		
Black	860	1060		
AB	1224	1344		
PVD RG, PVD Gold	1340	1620		



L-84

Finish	4"	Finish	4"
CP	740	PVD RG	1140
Black	780	PVD Gold	1140
AB	944		



L-85

Finish	3"	4"		
CP	1180	1300		
Black	1220	1340		
AB	1440	1620		
PVD RG, PVD Gold	1960	2160		



L-86

Finish	3"	4"	6"	
CP	940	1060	1300	
Black	940	1060	1300	
AB	1160	1328	1612	
PVD RG, PVD Gold	1340	1540	1860	



L-90

Finish	4"	6"	8"	10"	12"	14"	16"
CP	308	560	680	800	960	1088	1208
Black	352	596	716	844	1016	1152	1280
AB	448	704	836	984	1184	1324	1460
PVD RG, PVD Gld	684	740	912	1068	1268	1428	1584



54 Sofa Leg

Material: SS-202



L-91

Finish	4"	5"	7"
CP	440	480	560
Black	488	528	608
AB	524	596	740
PVD RG, PVD Gold	760	840	1000



L-92

Finish	4"	Finish	4"
CP	844	PVD RG	1184
Black	884	PVD Gold	1184
AB	1032		



L-93

Finish	4"	Finish	4"
CP	628	PVD RG	868
Black	688	PVD Gold	868
AB	788		



L-94

Finish	4"	Finish	4"
CP	1216	PVD RG	1296
Black	1276	PVD Gold	1296



L-96

Finish	3"	4"	5"	6"
CP	540	644	716	800
Black	556	664	744	836
AB	612	744	840	944
PVD RG, PVD Gold	900	1124	1316	1520



L-98

Finish	4"	Finish	4"
CP	800	PVD RG	1160
Black	880	PVD Gold	1160
AB	960		



Finish	4"	Finish	4"
Black/TT	748		
Black/Gold	772		
Black/RG	772		



Finish	4"	Finish	4"
CP	576	PVD RG	976
Black	576	PVD Gold	976
AB	688		



Finish	4"	5"	6"
Black/Gold	456	488	520
Black/RG	456	488	520
Black/TT	456	488	520
PVD Gold/AB	544	584	628



Finish	4"	6"	8"	10"	12"	14"	16"
CP	524	628	720	840	992	1096	1216
Black	536	640	744	884	1044	1160	1284
AB	628	748	864	1028	1212	1360	1512
PVD RG, PVD Gold	776	1024	1264	1464	1692	1876	2072



Finish	3"	4"	6"
CP	632	716	884
Black	656	740	912
AB	756	840	900
PVD RG, PVD Gold	948	1076	1332



Finish	3"	4"	5"
CP TT	432	500	576
Black TT	484	580	664
PVD RG/TT	760	920	1100
PVD Gold/TT	760	920	1100



56 Sofa Leg

Material: SS-202



L-1205

Finish	4"	6"	8"
CP	472	568	664
Black	472	568	664
AB	652	764	876
PVD RG, PVD Gold	700	820	940



L-1206

Finish	4"
PVD RG	700
PVD Gold	700
PVD Black	700



L-1207

Finish	4"	6"
AB	760	1040
PVD Gold	800	1080
PVD RG	800	1080
PVD Black	860	1164



L-1208

Finish	4"	6"	8"	10"	12"
AB	760	1040	1320	1640	1960
PVD Gold	800	1080	1360	1680	2000
PVD RG	800	1080	1360	1680	2000
PVD Black	860	1164	1468	1812	2156





Material: Zinc



1501

Finish	Rate	Finish	Rate
CP/Satin	3120	PVD RG/Gray	3640
CP/White	3120	PVD Gold/AB	3560
CP/BC	3120	Black/TT	3320



1505

Finish	Rate		
CP/Satin	2960		
PVD RG/Gray	3200		



1506

Finish	Rate		
Satin	2920		
AB	3160		



1507

Finish	Rate		
Satin	3160		
BC	3280		
AB	3400		



1508

Finish	Rate		
CP	2680		
Satin	2840		
AB	3080		



1509

Finish	Rate		
CP	2680		
Satin	2840		
AB	3080		

Material: Zinc



1512

Finish	Rate		
CP	2720		
Satin	2880		
AB	3120		



1513

Finish	Rate		
CP	2720		
Satin	2880		
AB	3120		



1514

Finish	Rate	Finish	Rate
CP/Satin	3340	Black/TT	3240
AB/Black	3580		
PVD RG/AB	3640		



1515

Finish	Rate	Finish	Rate
CP	3020	PVD RG	3520
Satin	3180		
AB	3420		



1516

Finish	Rate		
Satin	3480		
AB	3720		



1517

Finish	Rate	Finish	Rate
CP/Matt	3400	PVD Gold/AB	3680
CP/Gray	3620		
PVD RG/Gray	3840		

Material: Zinc



Finish	Rate		
Satin	3040		
AB	3280		
Gray	3380		



Finish	Rate	Finish	Rate
Satin	2900	PVD RG	3240
AB	3140		
Gray	3180		



Finish	Rate		
Satin/Wenge	3340		
AB/Black	3580		



Finish	Rate		
Brush Matt	2800		
AB	3040		
Gray	3080		



Finish	Rate		
Satin	3380		
AB	3620		
Gray	3660		



Finish	Rate	Finish	Rate
Satin	3140	PVD Gold	3480
AB	3380	PVD RG	3480
Gray	3420		

Material: Zinc



1525

Finish	Rate	Finish	Rate
Satin	2820	PVD RG	3160
AB	3060	PVD Gold	3160
Gray	3100		



1526

Finish	Rate	Finish	Rate
Satin	2760	PVD RG	3100
AB	3000	PVD Gold	3100
Gray	3040		



1529

Finish	Rate	Finish	Rate
CP/Satin	3540	PVD RG/Gray	3880
Satin/Gray	3740		
AB/Gray	3800		



1530

Finish	Rate		
AB	3360		
BC	3360		



1531

Finish	Rate	Finish	Rate
CP/Matt	3520	PVD Gold/White	3920
AB/Gray	3760	PVD RG/Wenge	3920
PVD Gold/AB	3820		



1532

Finish	Rate	Finish	Rate
CP/Matt	3580	PVD RG/Black	3920
AB/Gray	3820		
PVD Gold/Black	3920		



Material: Zinc



1533

Finish	Rate	Finish	Rate
Satin/Gray	3060	PVD RG/Gray	3240
AB/Gray	3080	PVD Gold/Black	3160
PVD Gold/AB	3160		



1534

Finish	Rate	Finish	Rate
CP/Matt	3860	PVD Gold/Black	4380
Satin/Gray	4000	PVD RG/Black	4380
AB/Gray	4120		



1535

Finish	Rate	Finish	Rate
CP/Brush	3640	Gray/AB	3920
AB/Gray	3880		
PVD Gold/Black	3960		



1536

Finish	Rate	Finish	Rate
Satin/Gray	3480	PVD Gold/AB	3560
Black/TT	3460		
PVD RG/AC	3560		



1537

Finish	Rate	Finish	Rate
Satin/Wenge	3040	PVD RG/AC	3300
Gray/Black	3260		
PVD Gold/AB	3300		



1538

Finish	Rate	Finish	Rate
Satin	2940	Black	2820
AB	3180	PVD RG	3280
AC	3180		



62 Mortise Handle

Material: Zinc



1539

Finish	Rate		
Satin/CP	3600		
Black/TT	3500		
PVD Gold/AB	3800		



1540

Finish	Rate	Finish	Rate
Satin/Black	3020	PVD Gold/AB	3200
Black/TT	2920		
PVD RG/AB	3200		



1541

Finish	Rate	Finish	Rate
CP/Satin	2840	PVD Gold/Black	3160
AB	3100		
Wine/AC	3140		



1542

Finish	Rate	Finish	Rate
Brush Matt	3060	PVD RG	3400
Black	2940	PVD Gold	3400
AB	3300		



1543

Finish	Rate	Finish	Rate
CP/Brush Matt	3160	Black/Gold	3320
AB/Gray	3420		
RG/TT	3500		



1544

Finish	Rate	Finish	Rate
Brush Matt	3100	PVD RG	3440
Black	2980	PVD Gold	3440
AB	3340		



Material: Zinc



1545

Finish	Rate	Finish	Rate
Brush Matt	3140	PVD RG	3480
Black	3020	PVD Gold	3480
AB	3380		



1546

Finish	Rate	Finish	Rate
Satin/Black	3100	PVD RG/Gray	3440
Gray/Black	3140		
PVD Gold/AB	3380		



1547

Finish	Rate	Finish	Rate
Brass Matt	2980	PVD RG/Gold	3320
Black	2860	PVD Matt RG/Gold	3500
AB	3220		



1548

Finish	Rate	Finish	Rate
Satin/Gray	3240	PVD RG/Gray	3520
Black/TT	3200		
PVD Gold/Black	3280		



1549

Finish	Rate	Finish	Rate
Black	3100	PVD RG/Gold	3560
Brass Matt	3220		
AB	3460		



1550

Finish	Rate	Finish	Rate
Black	2800	PVD RG/Gold	3260
Brassmatt	2920		
AB	3160		



64 Mortise Handle

Material: Zinc



1551

Finish	Rate	Finish	Rate
Black	2880	PVD RG/Gold	3340
Brasmatt	3000	PVD Matt/RG	3520
AB	3240		



1552

Finish	Rate	Finish	Rate
Black	3100	PVD RG/Gold	3560
Brasmatt	3220		
AB	3460		



1553

Finish	Rate	Finish	Rate
Brasmatt/Gray	3060	PVD Gold/AB	3360
Black/TT	3160		
PVD RG/Black	3240		



1554

Finish	Rate	Finish	Rate
Brasmatt	2768	PVD RG	3160
Black	2500	PVD Gold	3160
AB	3020		





Material: Zinc



1501

Finish	10"		
PVD RG/Gray	4640		
PVD Gold/AB	4520		
Black/TT	4120		



Finish	8"		
CP	2600		
Satin	2760		
AB	3000		



1519

Finish	10"	Finish	10"
Satin	3060	PVD Gold	3880
AB	3300	PVD RG	3880
Gray	3340		



1519

Finish	8"		
Satin	2900		
AB	3140		
Gray	3180		



66 Mortise Handle

Material: Zinc



1524

Finish	8"		
CP/Satin	2880		
AB/Black	3080		
Gray/BN	3180		



1525

Finish	8"		
Satin	2740		
Gray	3020		
AB	2980		



1527

Finish	8"		
Satin	3080		
AB	3280		
Gray	3340		



1533

Finish	10"		
PVD Gold/AB	4400		
PVD RG/Gray	4640		



Material: Zinc



1535

Finish	10"		
CP/Brush Matt	4300		
AB/Gray	4760		
Black/PVD Gold	4600		



1536

Finish	10"	Finish	10"
Satin/Gray	4520	PVD RG/AC	4640
Black/TT	4320		
PVD Gold/AB	4640		



1538

Finish	8"		
Satin	2940		
AB, AC	3180		
Black	2820		



1538

Finish	8"		
Satin	2940		
AB, AC	3180		
Black	2820		



68 Mortise Handle

Material: Zinc



1540

1539

Finish	10"	Finish	10"
Satin/Black	4000	Black/TT	4120
PVD RG/AC	4480		
PVD Gold/AB	4480		

Finish	10"		
Black/TT	4600		
PVD Gold/AB	5000		



Lock Body

Finish	60x85	45x85	45x45	45Lech	60Lech
SS	1280	1120	860	600	720
AB, Black	1480	1320	1020	660	784
RG, Gold	1660	1500	1160	780	1000
PVD RG, Gold	1920	1760	1360	940	1140



Material: Brass



Finish	60mm	70mm	80mm	90mm	100mm
SS	1300	1380	1500	1620	1760
AB	1360	1440	1560	1680	1820
Black, RG, Gray	1420	1500	1620	1740	1880
PVD RG, PVD Gold	1600	1680	1840	2000	2200



Finish	60mm	70mm	80mm	90mm	100mm
SS	976	1060	1176	1296	1436
AB	1036	1116	1236	1356	1496
Black, RG, Gray	1096	1176	1296	1416	1556
PVD RG, PVD Gold	1276	1360	1516	1676	1876



Finish	60mm	70mm	80mm	90mm	100mm
SS	1200	1280	1400	1520	1660
AB	1260	1340	1460	1580	1720
Black, RG, Gray	1320	1400	1520	1640	1780
PVD RG, PVD Gold	1500	1580	1740	1900	2100



Finish	45mm	Finish	45mm
SS	820	PVD RG	1060
AB	860	PVD Gold	1060
Black RG/Gray	900		





70 Glass Door Handle

Material: Zinc



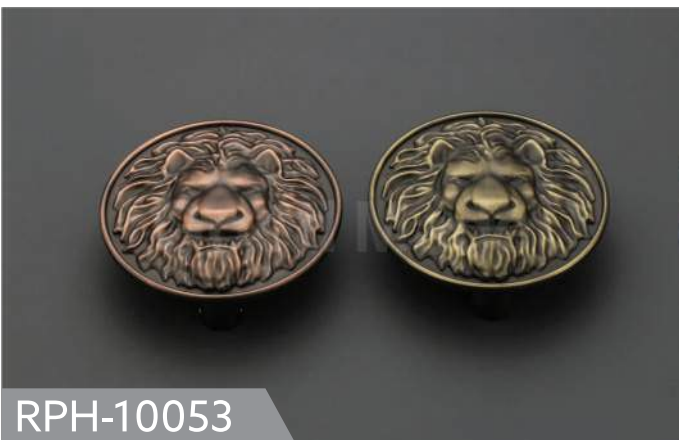
RPH-10051

Finish	96	160		
Black	810	1450		
AB	860	1550		
PVD RG & Gold	1150	2200		



RPH-10052

Finish	96		
AB	1400		
AC	1400		



RPH-10053

Finish	96		
AB	1500		
AC	1500		



RPH-10054

Finish	160		
Black/Brush Matt	2150		
PVD Gold/AB	2600		
PVD RG/AC	2600		



RPH-10055

Finish	96	Finish	96
Black/TT	1400	PVD Gold/Black	1700
CP/Brush matt	1400	AB/Gray	1450
PVD RG/AC	1700		



RPH-10056

Finish	96	Finish	96
AB	950	PVD RG	1250
AC	950		
PVD Gold	1250		



Material: Zinc



Finish	96	Finish	96
AB	900	PVD Gold	1150
SA	900	PVD RG	1150



Finish	96	Finish	96
CP/Brush Matt	1750	PVD Gold/White	2000
Wine/TT	1950	PVD Gold/Black	2200
PVD RG/AC	2050		



Finish	160	Finish	160
AB	1200	PVD Gold	1800
AC	1200	PVD RG	1800



Finish	160	Finish	160
AB	1400	PVD Gold	2000
AC	1400	PVD RG	2000



Finish	160	Finish	160
CP/Brush Matt	1750	PVD Gold/AB	2600
Brush Matt/Cubik Wenge	2004	PVD RG/Gray	2600
Black/TT	1850		



Finish	224	Finish	224
Black	1850	PVD Gold	2700
AB	1900	PVD RG	2700
AC	1900		



72 Glass Door Handle

Material: Zinc



RPH-10063

Finish	224	Finish	224
Black	1600	PVD RG	2400
AB	1800	PVD Gold	2400
AC	1800		



RPH-10064

Finish	224	Finish	224
Black	1850	PVD RG	2700
AB	2150	PVD Gold	2700
AC	2150		



RPH-10065

Finish	160	Finish	160
Black/TT	1544	PVD Gold/AB	2160
CP/BrushMatt	1552	PVD RG/Gray	2256



RPH-10066

Finish	96	Finish	96
AB	976	PVD Gold	1188
AC	976	PVD RG	1188
Black	924		



RPH-10067

Finish	96	Finish	96
Black	848	PVD Gold	1112
AB	900	PVD RG	1112



RPH-10069

Finish	96		
Black/TT	1584		
PVD RG/Gray	2088		

Material: Zinc



Finish	300mm	Finish	300mm
Satin	1784	PVD Gold	1920
AB	1832	PVD RG	1920



Finish	300mm	Finish	300mm
Satin	1964	PVD RG	2100
AB	2012	PVD Gold	2100
Gray	2060		



Finish	250mm	Finish	250mm
Satin	1680	PVD Gold	1808
AB	1728	PVD RG	1808



Finish	300mm	Finish	300mm
Satin	1808	PVD Gold	1944
AB	1856	PVD RG	1944
Gray	1904		



Finish	250mm	Finish	250mm
Matt	1880	PVD Gold	2020
AB	1928	PVD RG	2020
CP	1808		



Finish	300mm	450mm	
Satin	1916	3080	
AB	1964	3152	
Gray	2012	3224	



74 Main Door Handle

Material: Zinc



1414

Finish	300mm	Finish	300mm
Satin	1760	PVD RG	1940
AB	1808	PVD Gold	1940
BN	1808		



1415

Finish	300mm	Finish	300mm
Satin/CP	2544	Gray/Satin	2780
AB/TT	2616	PVD Gold/White	2888
Gray/BN	2780		



1416

Finish	300mm	Finish	300mm
Satin	2200	PVD Gold	2440
AB	2248	PVD R.Gold	2440
BN	2248		



1417

Finish	300mm		
CP/Satin	1824		
AB/Black	1872		
Gray/BN	1920		



1418

Finish	300mm	Finish	300mm
Satin	1992	PVD Gold	2184
AB	2040	PVD RG	2184
Gray	2088		



1421

Finish	300mm	450mm	600mm	900mm	1200mm
AB	4752	5244	5732	6708	7688



Material: Zinc



1422

Finish	300mm	450mm	
Brash Matt/CP	1964	2900	
AB/Gray	2012	2972	
PVD RG/Black	2148	3160	
PVD Gold/Black	2148	3160	



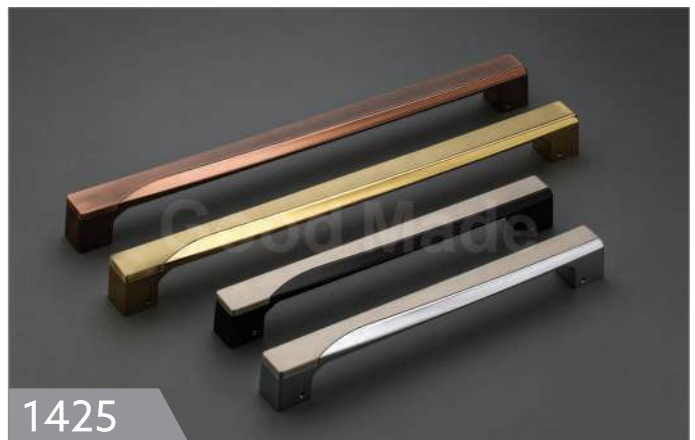
1423

Finish	300mm	450mm	
Brash Matt/CP	2280	3584	
PVD Gold/Black	2328	3656	
PVD Gold/AB	2328	3656	
PVD RG/White	2492	3888	



1424

Finish	300mm	450mm	
Brash Matt/CP	2412	3232	
AB/Gray	2460	3304	
AC/RG	2500	3364	
PVD Gold/Black	2620	3520	



1425

Finish	300mm	450mm	
Brash Matt/CP	2412	3448	
Black/SS	2484	3556	
PVD Gold/AB	2620	3800	
PVD RG/AC	2620	3800	



1426

Finish	300mm	450mm	
Brash Matt/CP	2448	3764	
Gray/Satin	2520	3872	
PVD Gold/AB	2688	4128	
PVD RG/Black	2688	4128	



1427

Finish	300mm	450mm	
Brash Matt/CP	2592	4048	
AB/Gray	2664	4156	
PVD RG/Black	2804	4368	
PVD Gold/Black	2804	4368	



76 Main Door Handle

Material: Zinc



1428

Finish	300mm	450mm	
Brush Matt	2644	3828	
AB	2692	3900	
PVD RG	2820	4092	
PVD Gold	2820	4092	



1429

Finish	300mm	450mm	
Brush Matt	2368	3524	
AB	2416	3596	
PVD Gold	2540	3784	
PVD RG	2540	3784	



1430

Finish	300mm	450mm	
Brush Matt	2300	3140	
AB	2348	3212	
PVD Gold	2480	3400	
PVD RG	2480	3400	



1433

Finish	300mm	450mm	
Brush Matt	3064	4380	
Black/TT	3112	4452	
PVD Gold/AB	3352	4804	
PVD RG/Gray	3352	4804	



1434

Finish	300mm	450mm	
Black/TT	2820	3840	
Gray/Brush Matt	2820	3840	
PVD Gold/AB	2980	4012	
PVD RG/Gray	2980	4012	



8011

Finish	200mm		
AB/Gray	1260		
Black/TT	1112		
Brasmatt/CP	1192		
PVD RG/Gray	1448		



Material: Zinc



8012

Finish	200mm		
AB/Gray	1312		
Black/TT	1164		
Brasmatt/CP	1240		
PVD RG/Gray	1496		



8013

Finish	200mm		
Black	1004		
AB	1108		
Brasmatt	1108		
PVD RG	1296		



8014

Finish	200mm		
Black	1084		
AB	1184		
Brasmatt	1184		
PVD RG	1372		



8015

Finish	200mm		
Black	1108		
AB	1212		
Brasmatt	1212		
PVD RG	1400		



8017

Finish	250mm	300mm
	Total Length 15"	Total Length 19"
Brass Matt	1868	2660
AB	1968	2760
PVD RG/Gold	2012	2840
PVD Black	2248	3120



8018

Finish	300mm	450mm
BrushMatt/CP, Black/TT	2520	3580
Black/PVD Gold	2576	3616
AB/PVD Gold	2736	3848
PVD RG/TT	2836	3992



1437

Finish	8"	Finish	8"
Black/TT	2320	PVD RG/Black	3200
Black/Gold	2340	PVD Gold/Black	3200
AB/Gold	2636		
Gray/SS	2288		



1438

Finish	8"	10"	
Black	1532	2560	
AB	1640	2900	
PVD Gold	1992	3880	
PVD RG	1992	3880	



1439

Finish	8"	12"	
AB/Gold	2080	2740	
Black/Gold	1760	2340	
Gray/SS	1640	2060	



1440

Finish	4"	6"	
Matt Black	940	1852	
AB	1088	2092	
PVD Gold	1548	2836	
PVD RG	1548	2836	



1441

Finish	8"		
Black	1660		
AB	1960		
PVD Gold	2560		
PVD RG	2560		



1442

Finish	Knob 4"	10"	15"
Black	480	1640	2600
AB	540	2000	3180
PVD Gold	612	3100	5860
PVD RG	612	3100	5860



1443

Finish	300mm	450mm	600mm
Black	1840	2340	2876
AB	2096	2712	3376
SS Matt	1960	2500	3096
Gold, RG	2200	2860	3564



1444

Finish	300mm	450mm	600mm	900mm	1200mm
Black	1680	2800	3352	8680	11840
AB	2080	3260	4000		
Gold	2220	3464	4240	9900	13420
RG	2220	3464	4240	9900	13420



1445

Finish	300mm	450mm	600mm
Black	1760	2168	2600
AB	2040	2600	2900
SS Matt	1880	2360	2840
Gold, RG	2180	2780	3380



1446

Finish	300mm	450mm	600mm	900mm	1200mm
Black	1652	2128	2476	3284	4088
Gold	2020	2552	3068	4120	5120
RG	2020	2552	3068	4120	5120



1447

Finish	6"		
Black	1944		
AB	2188		
PVD RG	2388		
PVD Gold	2388		



1448

Finish	8"		
Black	1864		
AB	2116		
PVD Gold	2224		
PVD RG	2224		



1449

Finish	6"		
Black	1116		
AB	1252		
PVD Gold	1364		
PVD RG	1364		



1450

Finish	6"		
Black	1240		
AB	1376		
PVD Gold	1488		
PVD RG	1488		



1451

Finish	8"		
Black	1564		
AB	1684		
PVD Gold	1848		
PVD RG	1848		



1452

Finish	6"		
Black	1660		
AB	1556		
PVD Gold	1780		
PVD RG	1780		



1453

Finish	Knob 2"	6"	
Black	240	1752	
AB	264	1936	
PVD Gold	272	2384	
PVD RG	272	2384	



1454

Finish	4"		
Black	1480		
AB	1660		
PVD Gold	1824		
PVD RG	1824		



1455

Finish	6"		
Black	1156		
AB	1340		
PVD Gold	1444		
PVD RG	1444		



1456

Finish	6"		
Black	1744		
AB	1920		
PVD Gold	2024		
PVD RG	2024		



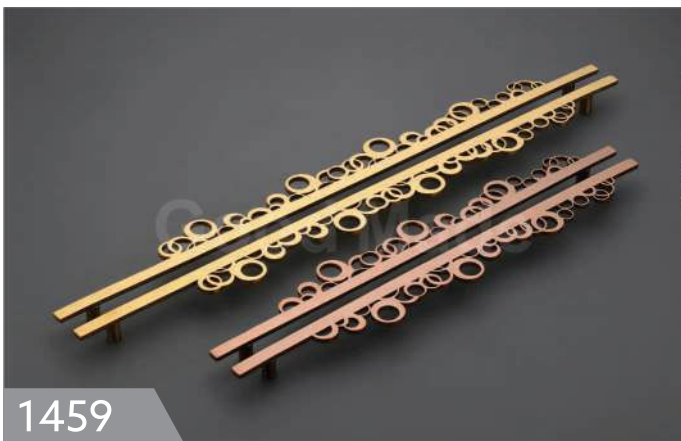
1457

Finish	8"		
Black	1044		
AB	1172		
PVD Gold	1252		
PVD RG	1252		



1458

Finish	8"		
Black	1540		
AB	1676		
PVD Gold	1880		
PVD RG	1880		



1459

Finish	12"	18"	24"
Black	1344	2176	2896
AB	1432	2312	3080
PVD Gold	1532	2404	3204
PVD RG	1532	2404	3204



1460

Finish	6"		
Black/PVD Gold	2200		
PVD Black/TT	2332		
PVD Gold/AB	2400		
PVD RG/Wenge	2252		



1461

Finish	Knob 4"	10"	
Black	604	1876	
AB	668	2120	
PVD Gold	740	2728	
PVD RG	740	2728	



1462

Finish	4"	6"	8"
Black	720	1092	2604
AB	748	1152	2864
PVD Gold	816	1344	3156
PVD RG	816	1344	3156



1463

Finish	12"	18"	24"	36"	48"
Black/PVD Gold	1536	1904	2280	3164	4280
Black/PVD RG	1536	1904	2280	3164	4280
AB/PVD Gold	1808	2272	3144	—	—

thanks!

PRODUCTS CLEANING INSTRUCTIONS



USE COTTON CLOTH TO CLEAN

DO NOT USE



THINNER



MASKING TAPE



ACID



TOILET CLEANER



DETERGENT POWDER

NOTE :

If you do not follow above instructions Company will not be Responsible for the Product Damage.



Good Made[®]

Mfg. By:

New Rameshwar Enterprise

Rajkot, Gujarat, INDIA.

Follow Us

